



OWN A
PIECE OF
Paradise
NORTH COAST OF MOMBASA



DWELL IN THE AURA OF PURE LUXURY

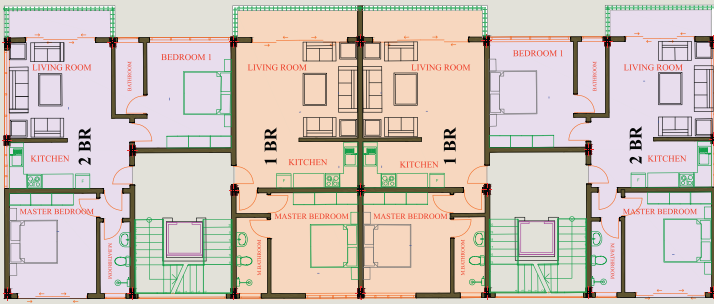


Sea facing luxurious 1, 2, 3 & 4 bedroom apartments, located in the heart of Kilifi, at the beach town of Kikambala.

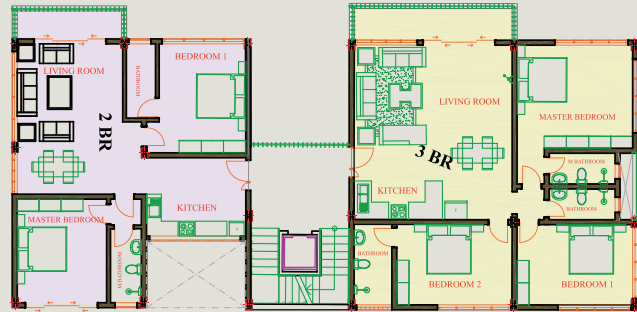
Dwell in the aura of pure luxury. Enjoy your own private space overlooking the sea, steps away from a beautiful white sandy beach. The apartments are designed with all the modern amenities to provide you with a comfortable, luxurious home.

And when you are not using your apartment, our property management company will take care of your property ensuring that it is rented out, offering attractive returns on your investment.

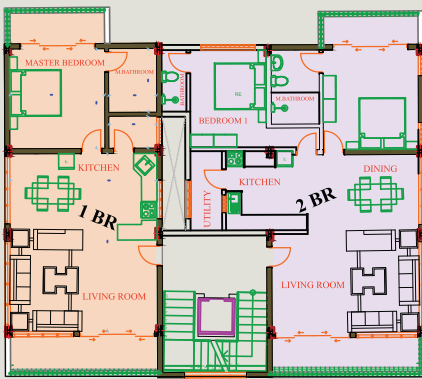
FLOOR PLANS



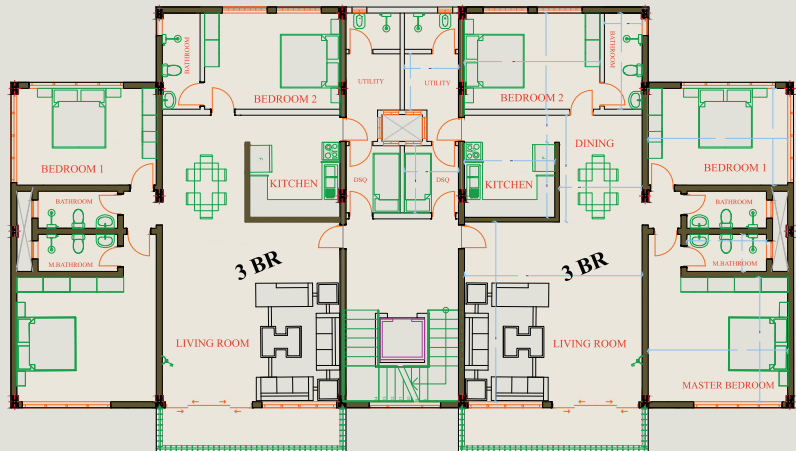
LUXURY SEA SHELL APARTMENTS
 1 BR apartments - 800 Sq. Ft
 2 BR apartments - 1100 Sq. Ft.



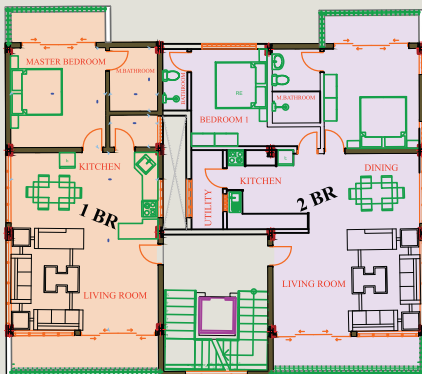
PREMIUM PEARL OYSTER APARTMENTS
 2 BR apartments - 1240 Sq. FT
 3 BR apartments - 1600 Sq. FT



ELITE STAR FISH APARTMENTS
 1 BR apartments - 1000 Sq. Ft.
 2 BR apartments - 1250 Sq. FT



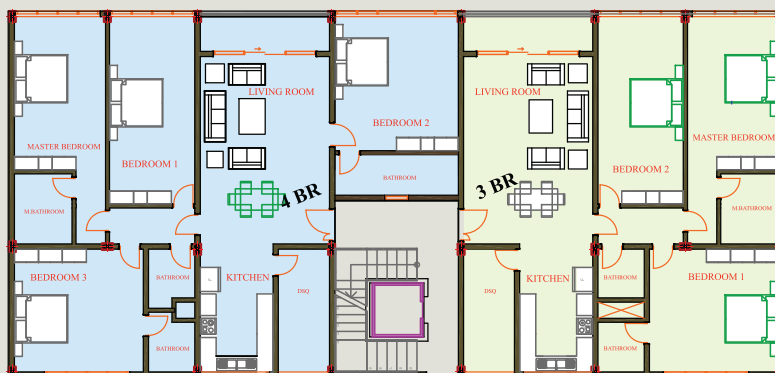
ELITE SEAGULL'S NEST APARTMENTS 3 BR apartment + DSQ
 1865 Sq. Ft



ELITE CORAL RIDGE APARTMENTS
 1 BR apartment - 1000 Sq. Ft
 2 BR apartment - 1250 Sq. Ft



ELITE DOLPHIN COVE APARTMENTS 1 BR apartment - 800 Sq. Ft
 2 BR apartment - 1100 Sq. Ft



ELITE

TURTLE CAY APARTMENTS

Sea Side
 3 BR apartments
 + DSQ - 2000 Sq. Ft.

Sea Side
 4 BR apartments
 + DSQ - 2400 Sq. Ft

SITE PLAN



PEARL OYSTER - A

STAR FISH - A

SEAGULL'S NEST - A

CORAL RIDGE - A

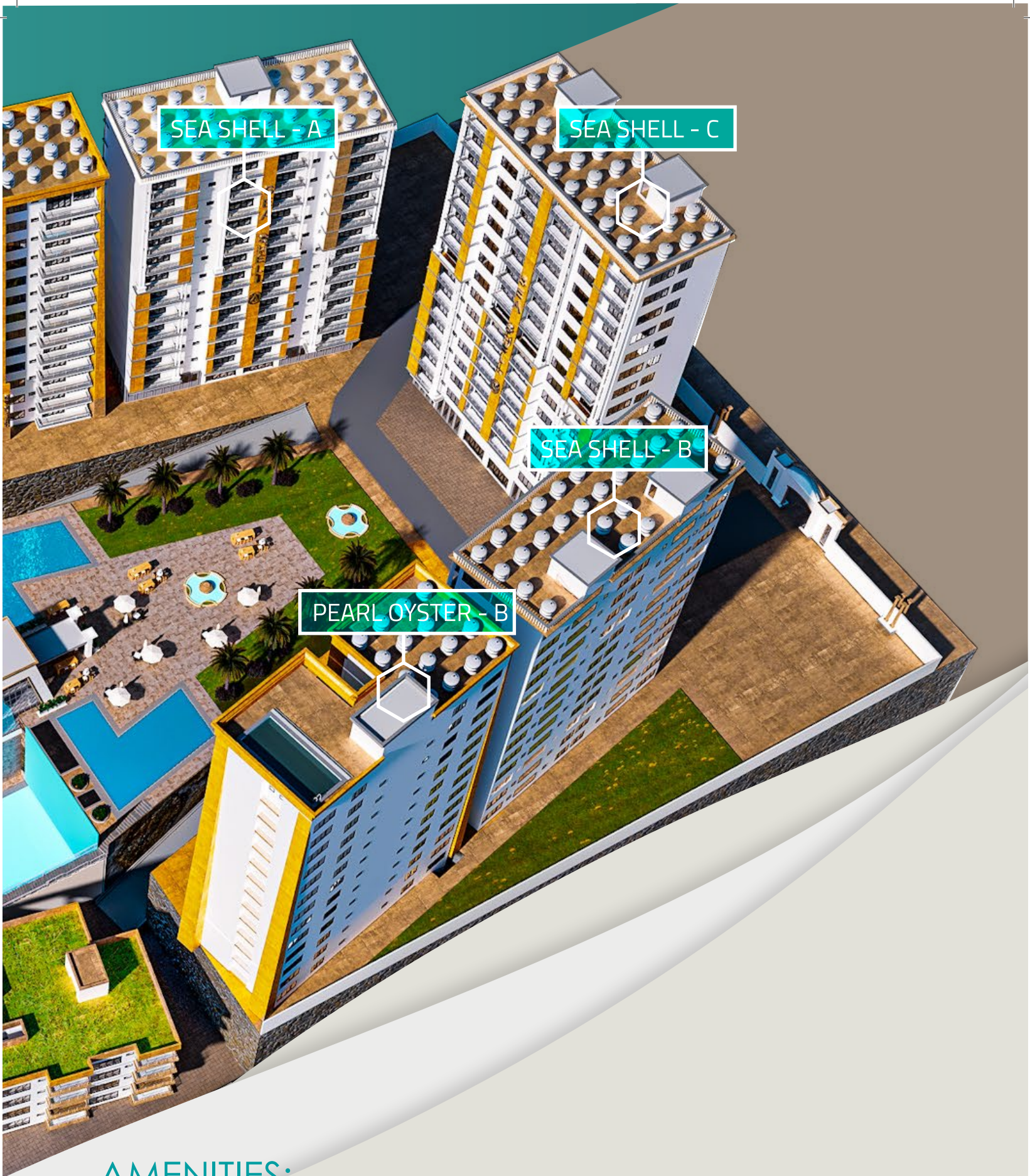
CLUB HOUSE

TURTLE CAY

DOLPHIN COVE

CORAL RIDGE - B

BEACH



SEA SHELL - A

SEA SHELL - C

SEA SHELL - B

PEARL OYSTER - B

AMENITIES:

- Swimming pool
- Spa, massage & Jacuzzi facilities
- Club house
- Theatre area
- Water Slide
- Outdoor sports
(incl. Beach volleyball etc)
- Gym & yoga centre
- Children Play Area
- Water Activities
- Beach Restaurant
- Business centre
- Landscaped gardens
- Convenience store
- Indoor sports
(incl. Table tennis, darts, pool, foosball etc)
- Jogging Track

ACTUAL SHOWHOUSE AND SITE PICTURES

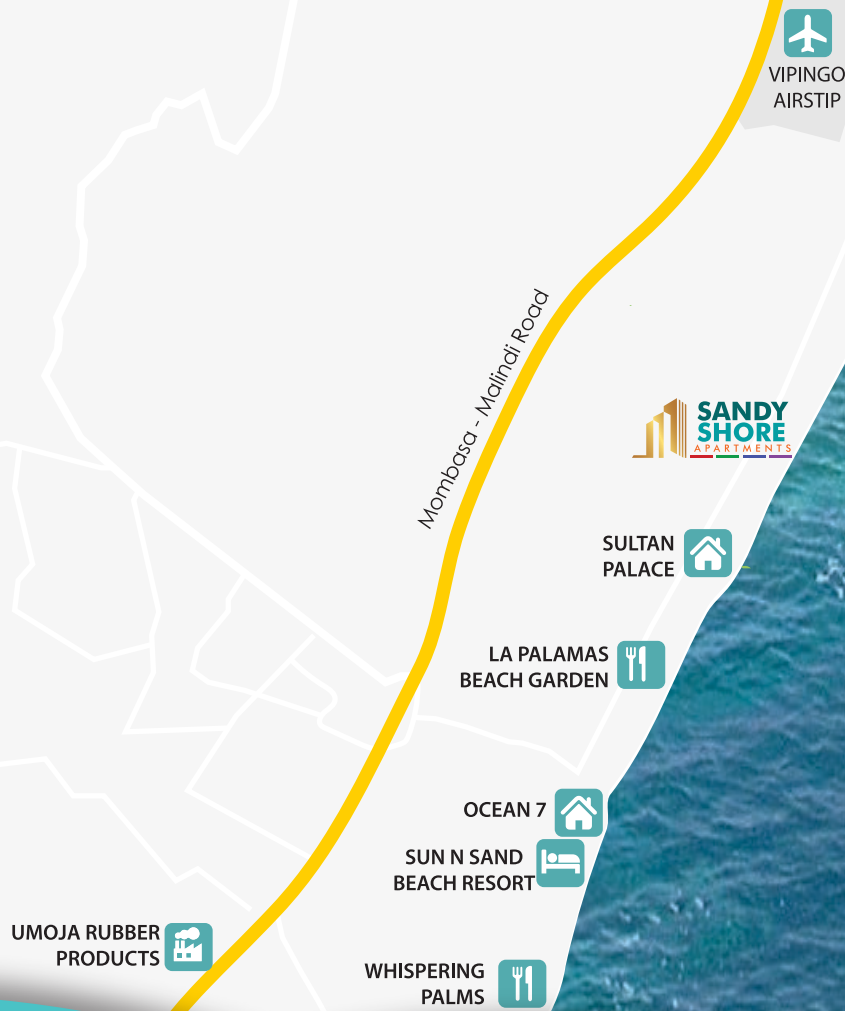


APARTMENT UNIT FEATURES

- Exclusive Egyptian themed finishes.
- Premium tile flooring in Entry, Living, Dining, Master Bedroom and Guest bedroom.
- Living & dining area designed to be bright and spacious.
- Elegantly proportioned window-walls with ocean views.
- Generous outside living balcony areas.
- Bespoke crafted and fitted wardrobes and dressing unit.
- En Suite bedrooms.
- Premium, durable countertops.
- Deck mounted kitchen faucet, from a quality international brand.
- Residences are fully pre-wired for high-speed internet & phone.
- CCTV in common areas.
- Fire-fighting / smoke detectors in common areas.
- Video inter-com door bell



MAP AND LOCATION



LOCATION HIGHLIGHTS

- Center point between Mombasa, Mtwapa, Malindi and Watamu with good access to all four tourist towns
- Playground for water sports including sport fishing, snorkelling, scuba diving, water skiing and diving
- Close to world class Vipingo ridge golf club
- Nature lovers have access to beautiful ocean marine life at various marine reserves as well as Kaya forest, and Arabuko Sokoke Forest Reserve
- For the adventure enthusiast there is Marafa Hell kitchen, Bore Valley, Mekatilili Wa Meza, Kapangani Rock, Sabaki Estuary in Magarini and mangrove swamps to explore.

NEAR-BY CONNECTIONS

- 6.5 km from Vipingo Airstrip
- 9.5 km from Vipingo Golf Ridge
- 9.7 km from Tuskys Mtwapa Mall
- 23km to Nyali City Mall
- 35 km from Moi International Airport
- 62 km from Arabuko Sokoke Forest
- 81 km from Watamu Marine National Reserve
- 90 km from Malindi Airport
- 97 km from Malindi Marine National Park



MOMBASA ADDRESS:

Epic Business Park, 7th Floor,
Links Road, Nyali,
P.O.BOX- 81911-80100,
Tel: +254 782 005 000

NAIROBI ADDRESS:

Parkview Heights, M4
Mombasa Road,
Tel: +254 705 791 702
Tel: +254 777 100 050



@fairdealpropertieseke



@FDILproperties



@fairdeal.properties.kenya



sales@fairdealproperties.biz



marketing@fairdealproperties.biz



www.properties.fairdeal.co.ke



DEVELOPED & MARKETING BY:

